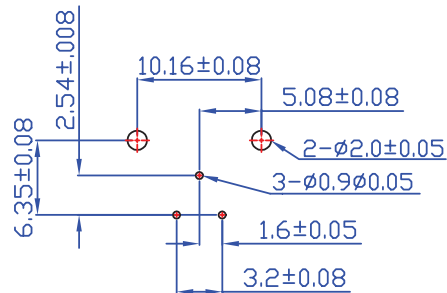
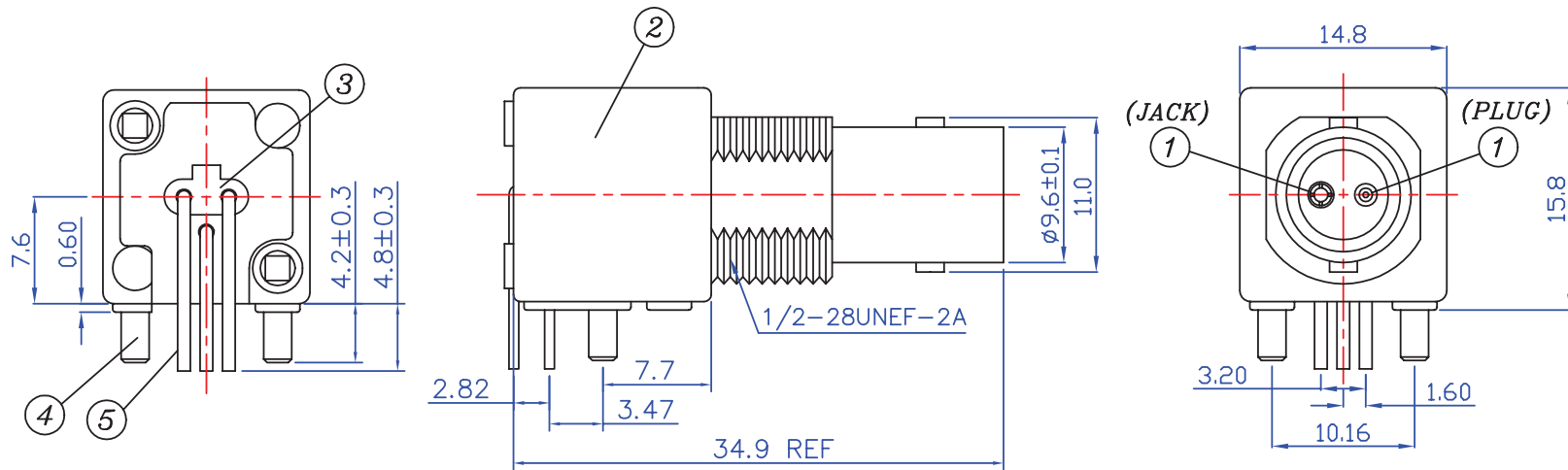


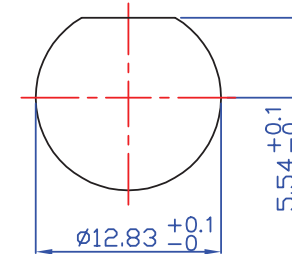
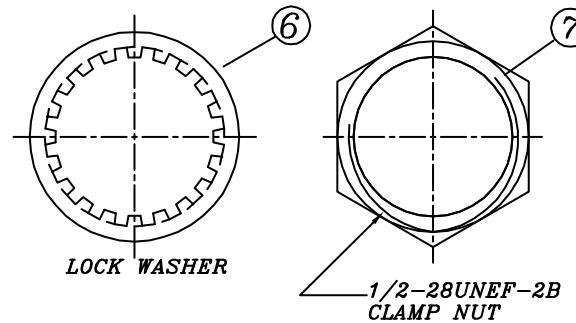
# CTP-BR-1003-H-Z

# CTP-7BR-1003-H-Z

REV.B



RECOMMENDED PC BOARD LAYOUT  
WITHOUT MOUNTING POSTS



RECOMMENDED MOUNTING HOLE  
MAXIMUM PANEL THICKNESS: 5.5MM

## MATERIAL & FINISH

- ① CENTER CONTACT (JACK&PLUG) : BRASS, GOLD PLATING
- ② BODY : ZINC ALLOY NICKEL PLATING
- ③ INSULATOR : PE-606
- ④ MOUNTING POST : BRASS, TIN PLATING

- ⑤ SOLDER TAIL : COPPER WIRE, TIN PLATING
- ⑥ WASHER : STEEL, NICKEL PLATING
- ⑦ NUT : BRASS, NICKEL PLATING



Phone 1-800-809-2751

Fax 1-510-440-0579

www.connect-tech-products.com • info@connect-tech-products.com

4428 Technology Drive • Fremont, CA 94538, USA • 510-498-8815 • Fax: 510-440-0579