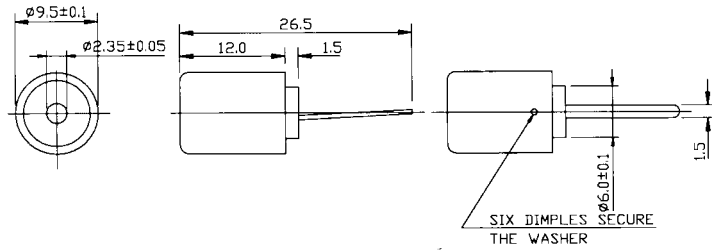


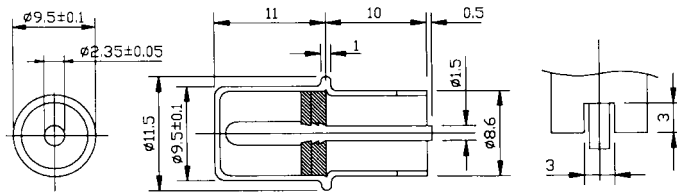
IEC Plug: Straight, Right Angle, Solder and Printed Circuit Board



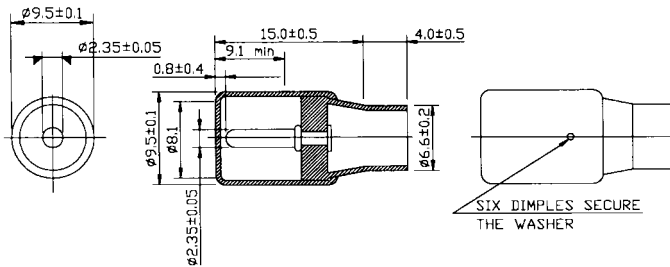
CTP-087-6A
SOLDER IEC PLUG



CTP-087-4
SOLDER IEC PLUG



CTP-087-3A-2
PIN SOLDER IEC PLUG



CTP-087H
RIGHT ANGLE PCB MOUNT IEC PLUG

