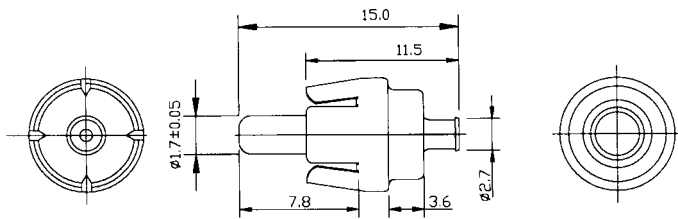


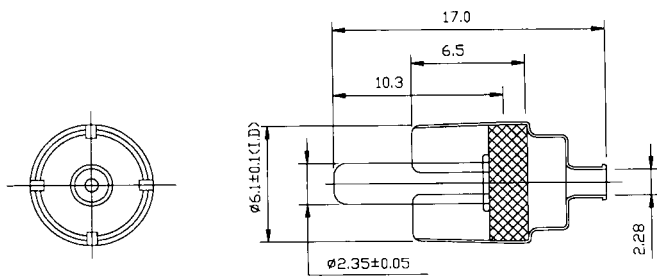
Mini Phono: Straight, Right Angle, Solder, Crimp Plugs



ALSO AVAILABLE FOR WITH 2.35MM PIN



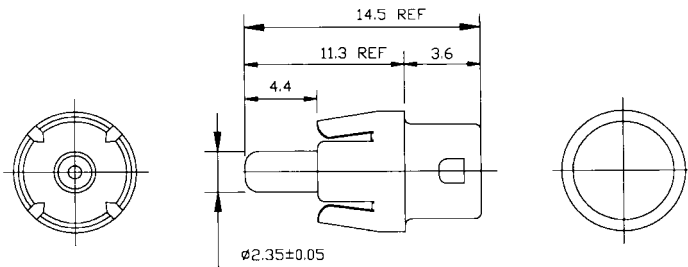
CTP-175-7A
STRAIGHT SOLDER MINI PHONO PLUG



ALSO AVAILABLE FOR WITH 1.7MM PIN



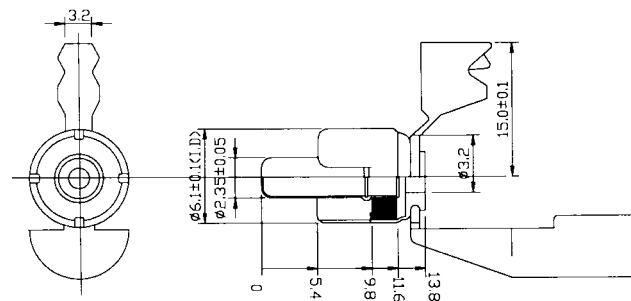
CTP-175-6
STRAIGHT SOLDER MINI PHONO PLUG



ALSO AVAILABLE FOR WITH 1.7MM PIN



CTP-175-11
RIGHT ANGLE SOLDER MINI PHONO PLUG



ALSO AVAILABLE FOR WITH 1.7MM PIN



CTP-175-12
RIGHT ANGLE SOLDER MINI PHONO PLUG