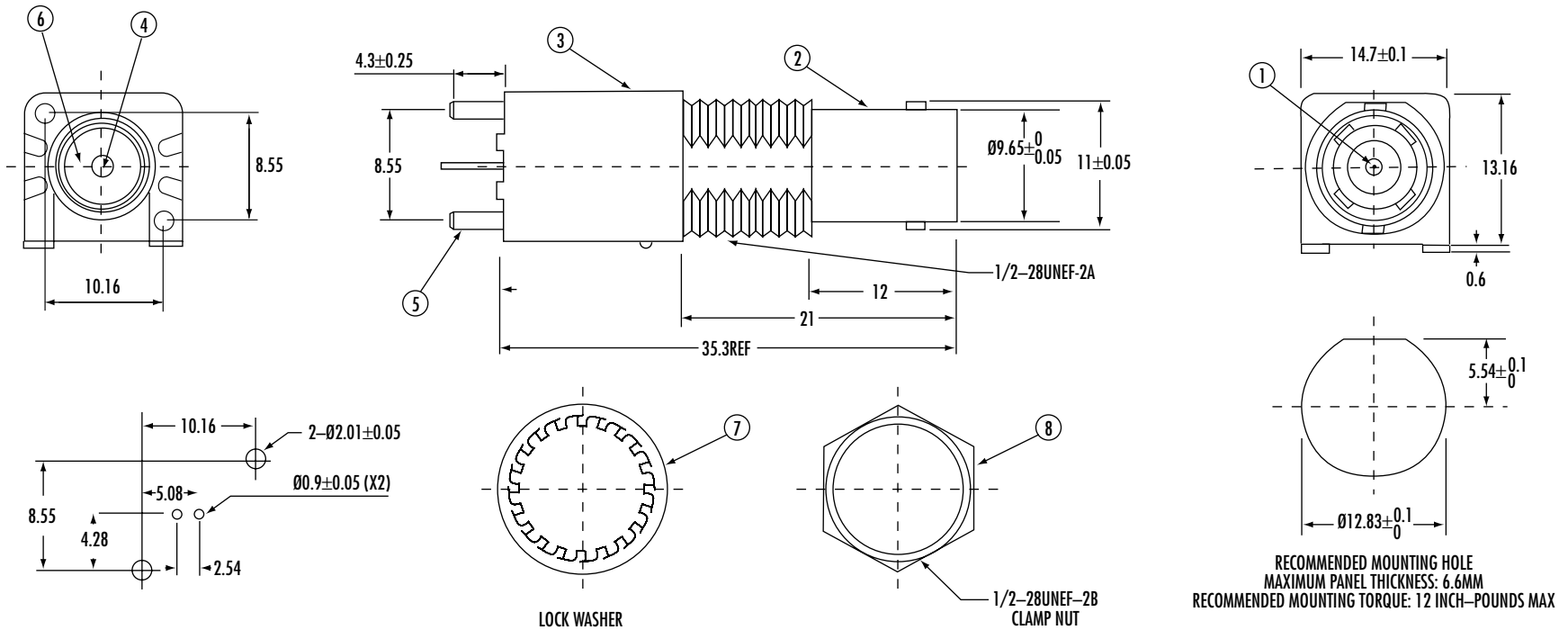


# CTP-BV-1001 50 OHM

# CTP-7BV-1001 75 OHM

CTP-BV-1001



**CONSTRUCTION**

- |                   |                 |
|-------------------|-----------------|
| 1. CENTER CONTACT | PHOSPHOR BRONZE |
| 2. BODY           | ZINC ALLOY      |
| 3. HOUSING        | PBT (94 V-0)    |
| 4. INSULATOR      | PE-606          |
| 5. MOUNTING POST  | BRASS           |
| 6. SOLDER TAIL    | BRASS WIRE      |
| 7. WASHER         | PHOSPHOR BRONZE |
| 8. NUT            | BRASS           |

**FINISH**

- |                |                  |
|----------------|------------------|
| BODY           | NICKEL PLATING   |
| CENTER CONTACT | GOLD PLATING     |
| SOLDER TAIL    | TIN LEAD PLATING |
| MOUNTING POST  | TIN LEAD PLATING |
| WASHER         | NICKEL PLATING   |
| NUT            | NICKEL PLATING   |

**COLOR**

BLACK OR WHITE



Phone 1-800-809-2751

Fax 1-510-440-0579

www.connect-tech-products.com • info@connect-tech-products.com

4428 Technology Drive • Fremont, CA 94538, USA • 510-498-8815 • Fax: 510-440-0579