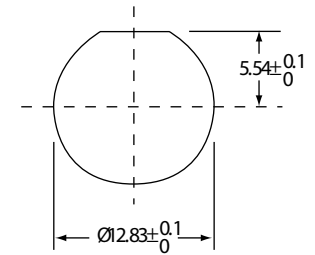
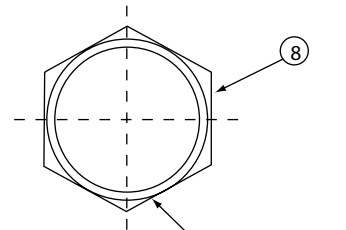
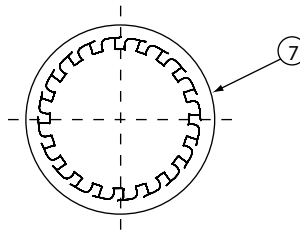
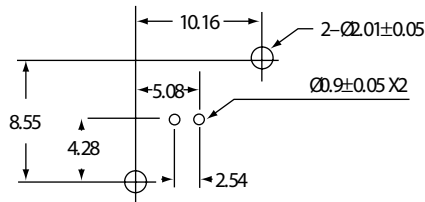
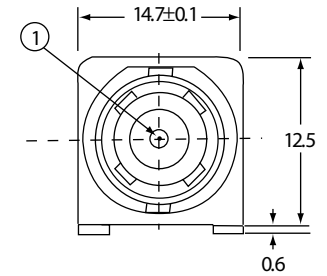
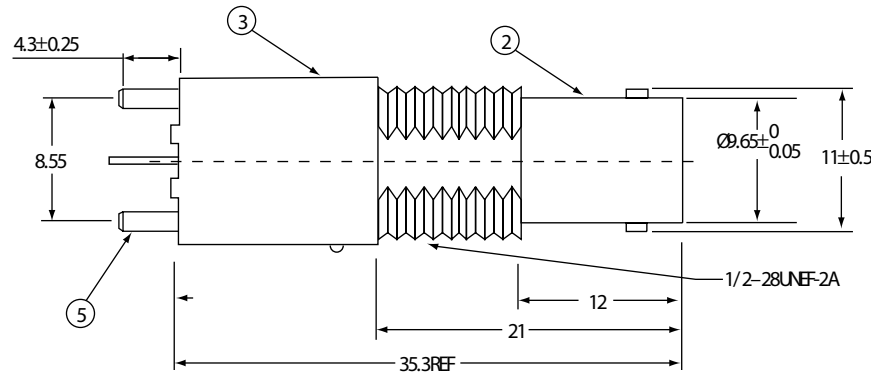
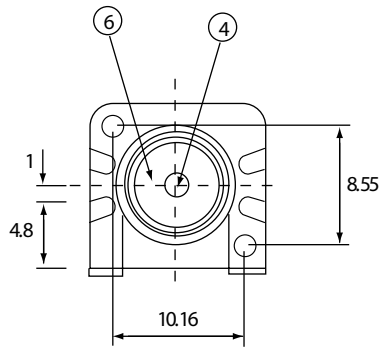


CTP-BV-1001-L-W

CTP-7BV-1001-L-W



RECOMMENDED MOUNTING HOLE
 MAXIMUM PANEL THICKNESS: 5.5MM
 RECOMMENDED MOUNTING TORQUE: 12 INCH-POUNDS MAX

LOCK WASHER

1/2-28UNF-2B
 CLAMP NUT

CONSTRUCTION

1. CENTER CONTACT	PHOSPHOR BRONZE
2. BODY	ZINC ALLOY
3. HOUSING	PBT (94 V-0)
4. INSULATOR	PE-606
5. MOUNTING POST	BRASS
6. SOLDER TAIL	BRASS WIRE
7. WASHER	PHOSPHOR BRONZE
8. NUT	BRASS

FINISH

BODY	NICKEL PLATING
CENTER CONTACT	GOLD PLATING
SOLDER TAIL	TIN PLATING
MOUNTING POST	TIN PLATING
WASHER	NICKEL PLATING
NUT	NICKEL PLATING

COLOR

WHITE



Phone 1-800-809-2751

Fax 1-510-440-0579

www.connect-tech-products.com • info@connect-tech-products.com

4428 Technology Drive • Fremont, CA 94538, USA • 510-498-8815 • Fax: 510-440-0579