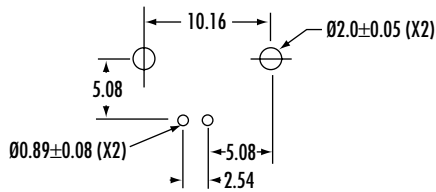
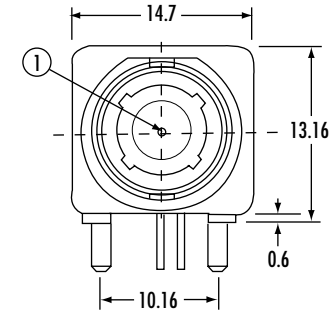
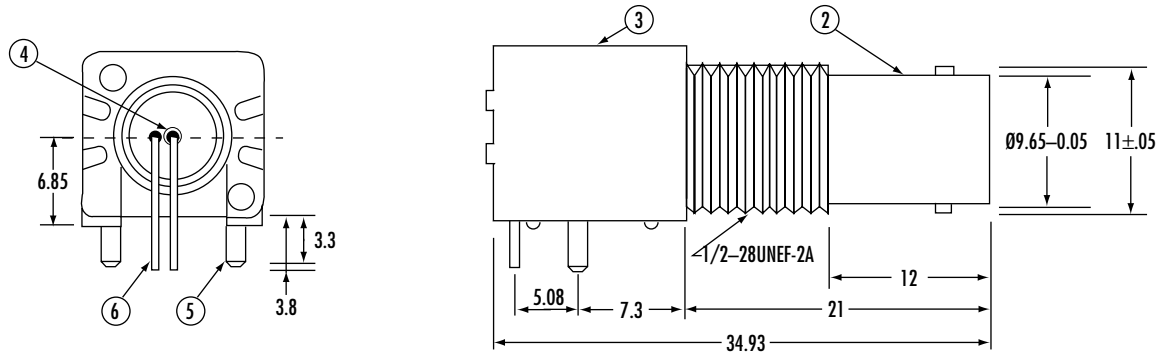
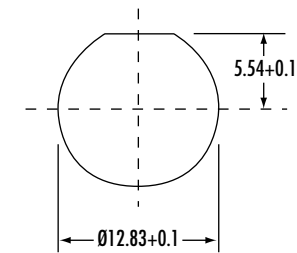


CTP-BR-1001 50 OHM

CTP-7BR-1001 75 OHM



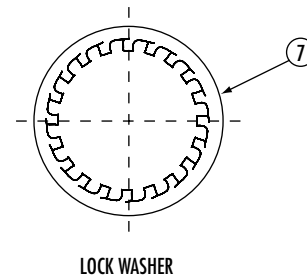
P.C.B. HOLE CONFIGURATION



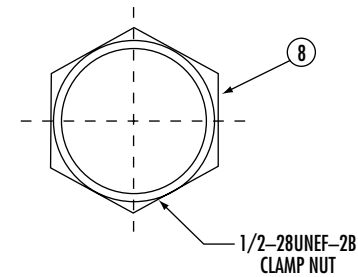
RECOMMENDED MOUNTING HOLE
 MAXIMUM PANEL THICKNESS: 5.5MM
 RECOMMENDED MOUNTING TORQUE: 12 INCH-POUNDS MAX

CONSTRUCTION

- | | |
|-------------------|---------------------------------|
| 1. CENTER CONTACT | PHOSPHOR BRONZE, GOLD PLATING |
| 2. BODY | DIECAST (ZINC#3) NICKEL PLATING |
| 3. HOUSING | PBT (94 V-0) |
| 4. INSULATOR | PE-606 |
| 5. MOUNTING POST | BRASS, TIN/LEAD PLATING |
| 6. SOLDER TAIL | BRASS WIRE |
| 7. WASHER | PHOSPHOR BRONZE, NICKEL PLATING |
| 8. NUT | BRASS, NICKEL PLATING |



LOCK WASHER



1/2-28UNEF-28
CLAMP NUT



Phone 1-800-809-2751

Fax 1-510-440-0579

www.connect-tech-products.com • info@connect-tech-products.com

4428 Technology Drive • Fremont, CA 94538, USA • 510-498-8815 • Fax: 510-440-0579