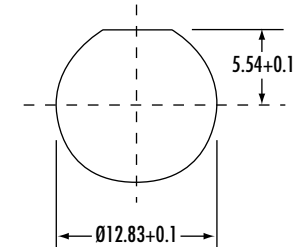
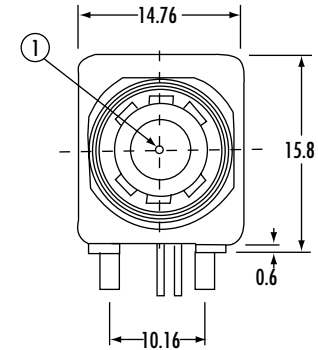
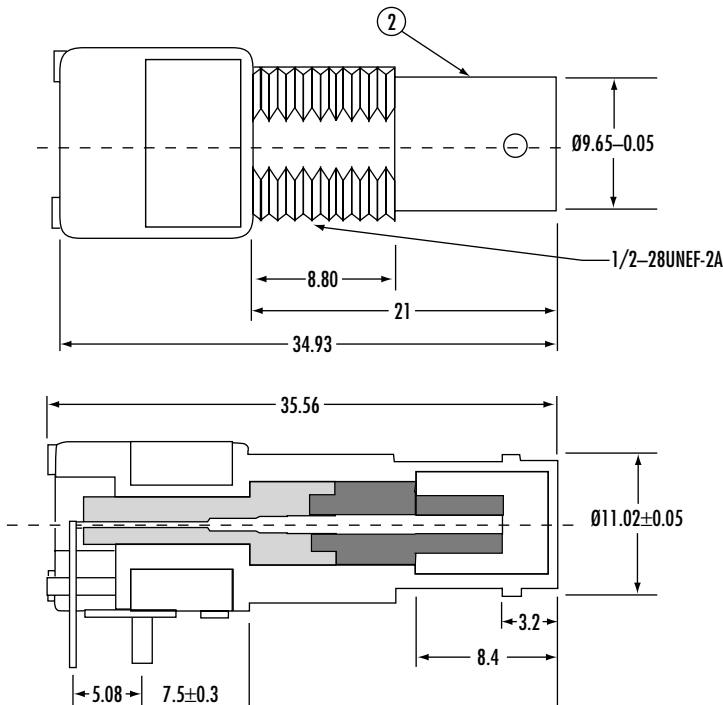
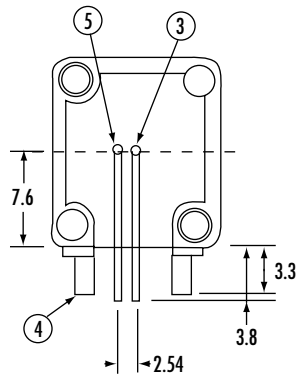


CTP-BR-1001-H-Z 50 OHM

CTP-7BR-1001-H-Z 75 OHM

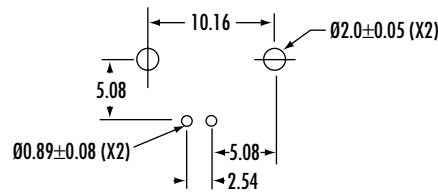


RECOMMENDED MOUNTING HOLE
 MAXIMUM PANEL THICKNESS: 6.5MM
 RECOMMENDED MOUNTING TORQUE: 12 INCH-POUNDS MAX

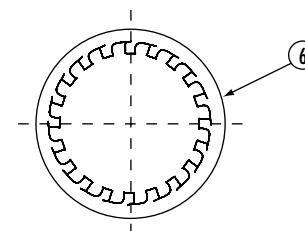
CONSTRUCTION

1. CENTER CONTACT
2. BODY
3. INSULATOR
4. MOUNTING POST
5. SOLDER TAIL
6. WASHER
7. NUT

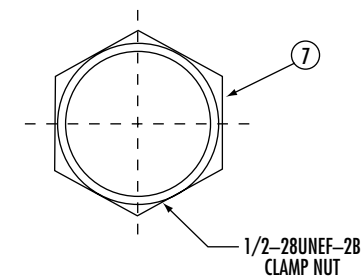
PHOSPHOR BRONZE, GOLD PLATING
 DIECAST (ZINC #3), NICKEL PLATING
 PE-606
 BRASS, TIN PLATING
 BRASS WIRE, TIN PLATING
 PHOSPHOR BRONZE, NICKEL PLATING
 BRASS, NICKEL PLATING



P.C.B. HOLE CONFIGURATION



LOCK WASHER



1/2-28UNEF-28
 CLAMP NUT



Phone 1-800-809-2751

Fax 1-510-440-0579

www.connect-tech-products.com • info@connect-tech-products.com

4428 Technology Drive • Fremont, CA 94538, USA • 510-498-8815 • Fax: 510-440-0579