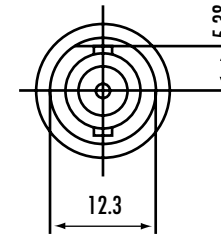
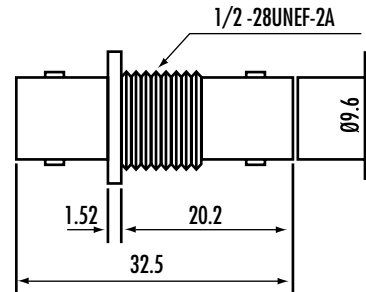
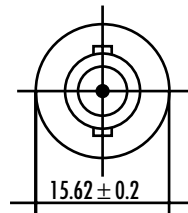
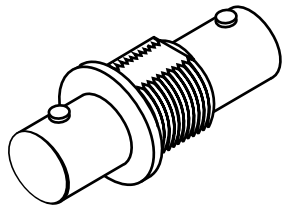


# CTP-BI-02 50 OHM

# CTP-7BI-02 75 OHM

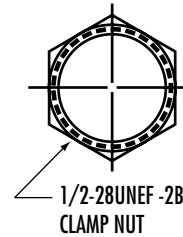


## MATERIAL & FINISH

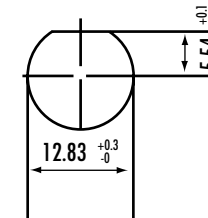
BODY	: DIE CAST, NICKEL PLATING WITH COPPER UNDERCOAT
CENTER CONTACT	: RHOSPOR BRONZE, GOLD PLATING
LOCK WASHER	: BRASS, NICKEL PLATING
INSULATOR	: PE-606
NUT	: BRASS, NICKEL PLATING
WASHER	: STEEL, NICKEL PLATING



LOCK WASHER



1/2-28UNEF-2B CLAMP NUT



RECOMMENDED MOUNTING HOLE

MAXIMUM PANEL THICKNESS : 5.5mm

RECOMMENDED MOUNTING TORQUE: 12 INCH-POUNDS MAX

## SPECIFICATION

IMPEDANCE	: 50Ω - 75Ω
VOLTAGE RATING	: 500V rms %
FREQUENCY RANGE	: 0-4 GH
INTERFACE PER MIL-C-39012C	

Phone 1-800-809-2751



Fax 1-510-440-0579

[www.connect-tech-products.com](http://www.connect-tech-products.com) • [info@connect-tech-products.com](mailto:info@connect-tech-products.com)

4428 Technology Drive • Fremont, CA 94538, USA • 510-498-8815 • Fax: 510-440-0579