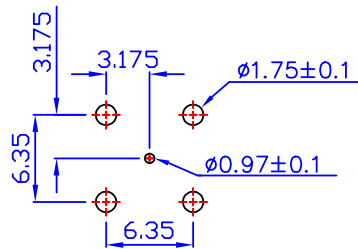
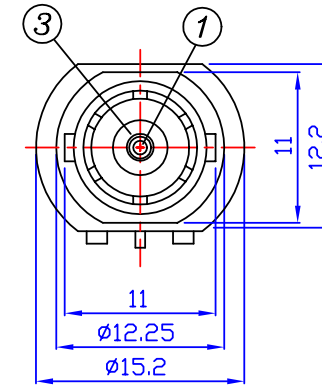
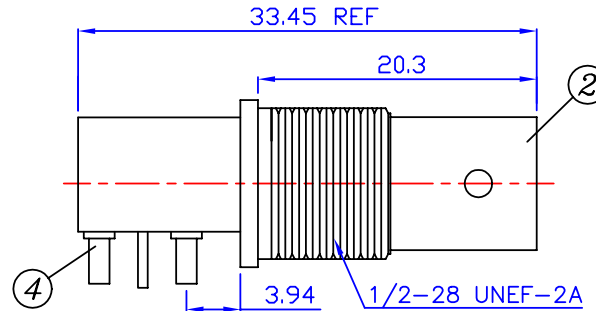
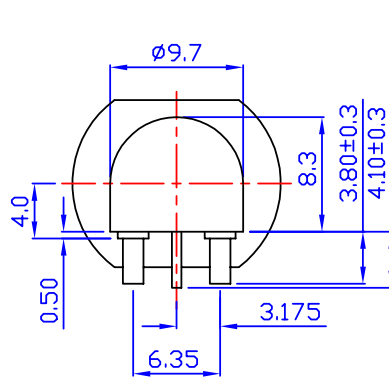
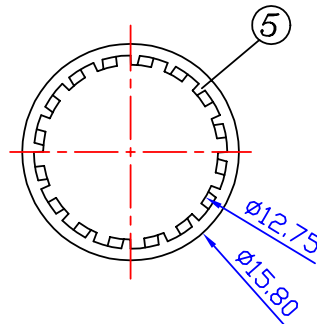


# CTP-7BR-4001-Z

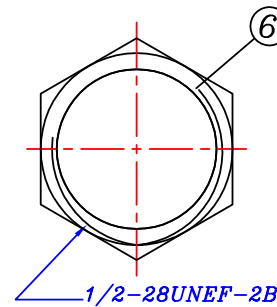
## 75 Ohm BNC Jack



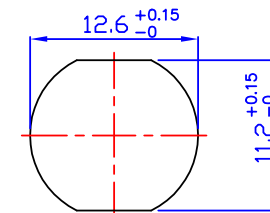
RECOMMENDED PC BOARD LAYOUT  
WITHOUT MOUNTING POSTS



LOCK WASHER



CLAMP NUT



RECOMMENDED MOUNTING HOLE  
MAXIMUM PANEL THICKNESS: 5.5MM

UNLESS OTHERWISE SPECIFIED:  
DIMENSIONS ARE IN mm  
TOLERANCES ARE:  
X. ± 0.5  
X.X ± 0.3  
X.XX ± 0.2  
ANGLES ± 3 DEG

### MATERIAL & FINISH

- ① CENTER CONTACT : PHOSPHOR BRONZE, GOLD PLATING
- ② BODY : ZINC ALLOY, NICKEL PLATING
- ③ INSULATOR : TPX
- ④ MOUNTING POST : BRASS, TIN PLATED
- ⑤ WASHER : STEEL, NICKEL PLATING
- ⑥ NUT : BRASS, NICKEL PLATING



Phone 1-800-809-2751

Fax 1-510-440-0579

www.connect-tech-products.com • info@connect-tech-products.com

4428 Technology Drive • Fremont, CA 94538, USA • 510-498-8815 • Fax: 510-440-0579